

Building connections that last™

Series SEA

Electric Actuator Datasheet



SEA Electric Actuator

Enclosure:

- IP67, Dust-tight, weather-tight, Type 4,4x
- Material: Polyester power-coated aluminum alloy

Motor:

- Standard extended duty cycle induction motor, class F insulation for all models.
- Built-in thermal protector prevents the motor from overheating and burnout.

Thermal trip temperature:

AC motor: 125±5°C (257±9°F)

- Standard Unit is 120 VAC
- Standard motors are 30% duty rated

Position Indicator:

- All models (except SEA1). SEA1 Come complete with a top mounted, visual position indicator.

Manual Override:

- Non-clutch design, the manual operation can be operated without any lever, clutch or brake upon power outage
- When electric motor is operating, manual hand-wheel will not rotate for safety purposes

Gear Train:

- High-alloy steel gear train, provides a self-locking function to avoid the valve from drifting and back driving the actuator gears.
- The gear train is factory lubricated for the life of the actuator using high-temperature grease.

Working Conditions:

- Ambient temperature: -22°F to 149°F
- Humidity: 30% to 95%

Various Options:

- Heater and Thermostat (HT)
- 2 Auxiliary Limit Switches (AS)
- Feedback Potentiometer (FP)
- Conduit entrance (½" PS, ¾" PF, ½" NPT)
- Feedback Transmitter (FT) 4-20mA
- Proportional Positioner (PP)(4-20mA, 1-5V or 2-10v)
- 220Vac, 24Vac, 24Vdc, 12Vdc Available
- Control Relays (CR)
- Timers (TR)
- Torque Sensor (TS)

Certifications:

- CE
- CSA, Type 4,4x



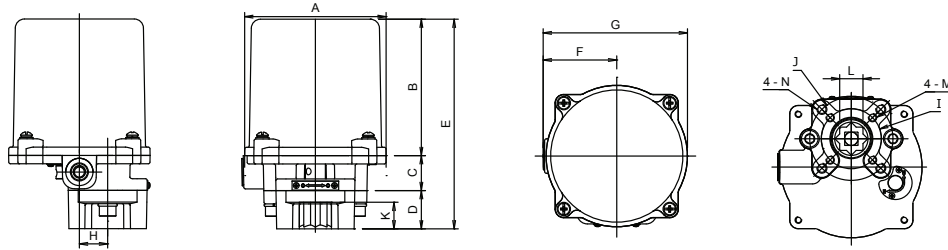
asc-es.com

Building connections that last™



Electric Actuator Series SEA

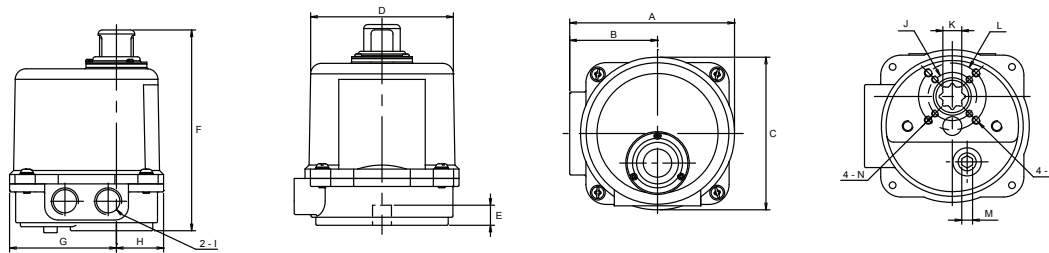
Dimensions



SEA1

Unit	A	B	C	D	E	F	G	H	I	J	K	L	M	N	Flange Type
in	3.35	3.23	0.83	0.90	4.96	1.73	3.42	0.67	1.42	1.97	0.63	0.55	M5 x 0.8	M6 x 1.0	F03 or F05
mm	85	82	21	23	126	44	87	17	36	50	16	14	M5 x 0.8	M6 x 1.0	F05

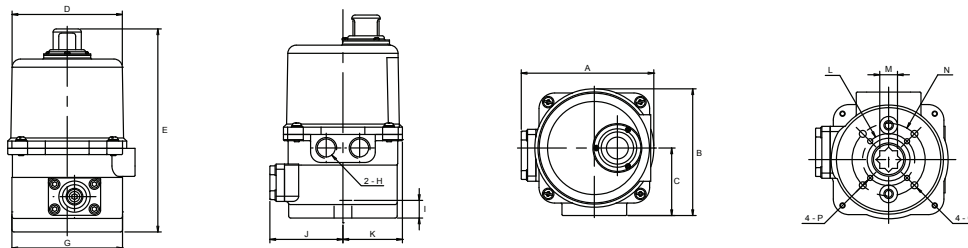
*The dimensions are bases on 110/220v AC actuator, for 24v AC type: B=ll3mm(4.45 in); E=157mm (6.18 in).



SEA3

Unit	A	B	C	D	E	F	G	H	I	J	K Max	L	M	N	P	Flange Type
in	4.80	2.56	4.49	4.17	0.59	5.9	3.11	1.38	½ PS	1.42	0.551	1.97	0.2	M5 x 0.8	M6 x 1.0	F03 or F05
mm	122	65	114	106	15	150	79	35	½ PS	36	14	50	8	M5 x 0.8	M6 x 1.0	F05

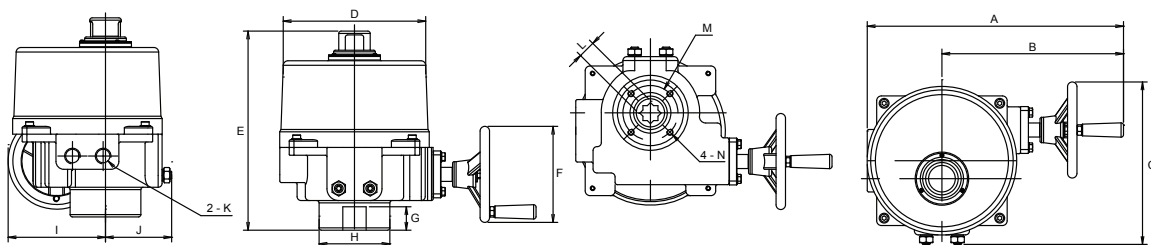
*Option: 1) K=llmm[0.43 in] 2) K=9mm[0.35 in] • With modulation card F=183mm[7.2 in] • No mechanical stops.



SEA4

Unit	A	B	C	D	E	G	H	I	J	K	L	M	N	P	Q	Flange Type
in	5.0	4.8	2.56	4.02	7.71	4.17	½ PS	0.79	2.76	2.24	1.97	0.669	2.76	M6 x 1.0	M8 x 1.25	F05 or F07
mm	127	122	65	102	196	106	½ PS	20	70	57	50	17	70	M6 x 1.0	M8 x 1.25	F07

*With modulation card E=229mm[9.01 in] • No mechanical stops.



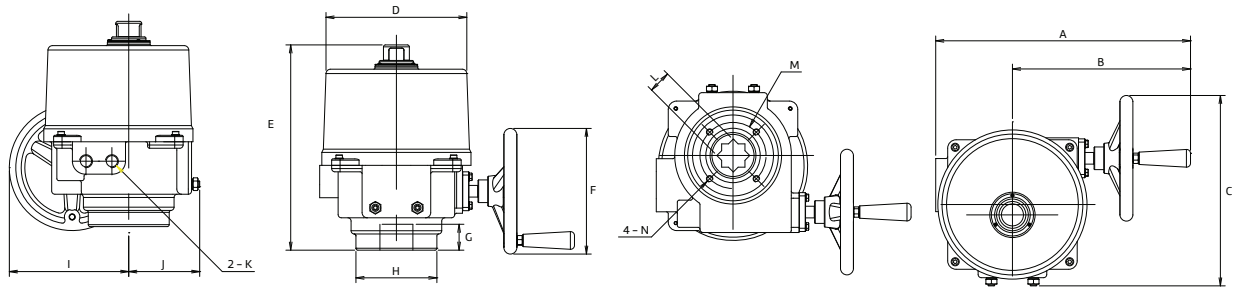
SEA8 and SEA13

Unit	A	B	C	D	E	F	G	H	I	J	K	L Max	M	N	Flange Type
in	12.83	9.09	8.15	7.13	10.04	4.76	1.18	3.54	4.88	3.31	½ PS	0.867	2.76	M8 x 1.25	F07
mm	85	231	207	181	255	121	30	90	124	84	½ PS	22	70	M8 x 1.25	F07

*With DC motor E=289mm[11.38 in] (applv, to DC model or 75% duty cycle) • With torque switch A=361mm[14.21 in].

Electric Actuator Series SEA

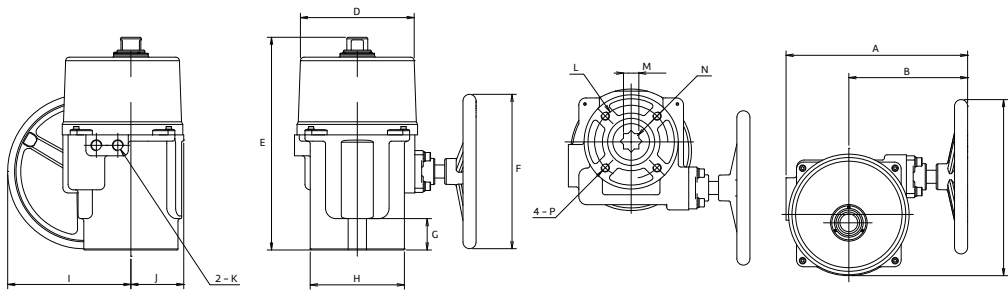
Dimensions (Cont.)



SEA35, SEA44, and SEA57

Unit	A	B	C	D	E	F	G	H	I	J	K	L	M	N	Flange Type
in	15.51	10.82	11.50	8.54	12.48	7.52	1.57	4.97	7.24	4.33	½ PS	1.42	4.01	M10* 1.5	F10
mm	394	275	292	217	317	191	40	125	184	110	½ PS	36	102	M10* 1.5	

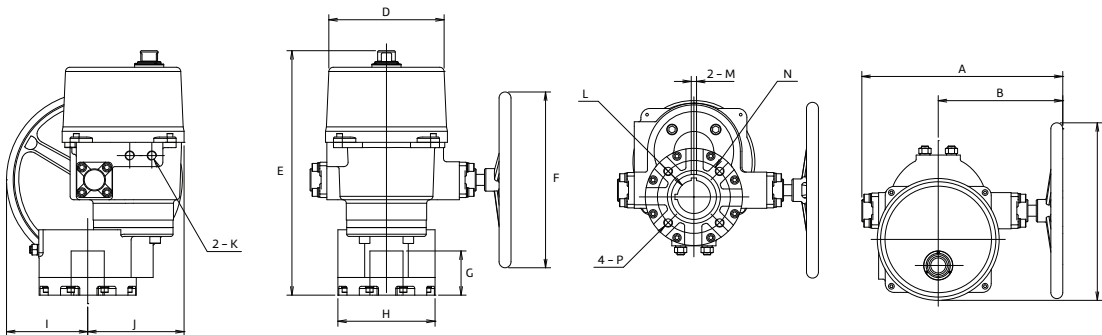
*With torque switch A=460mm[18.11 in].



SEA88 and SEA132

Unit	A	B	C	D	E	F	G	H	I	J	K	L	M	N	P	Flange Type
in	13.66	8.94	13.23	8.54	15.98	11.61	2.36	7.09	9.25	3.98	½ PS	4.92	1.38	1.38	M12* 1.75	F12 or F14
mm	347	227	336	217	406	295	60	180	235	101	½ PS	125	35	35	M12* 1.75	

*With torque switch A=435mm[17.13 in] • With Flange type F14: L=140mm[5.51 in] & P=M16*2.0.



SEA177, SEA221, SEA265, and SEA310

Unit	A	B	C	D	E	F	G	H	I	J	K	L	M	N	P	Flange Type
in	17.91	11.10	15.83	10.27	21.81	15.67	3.94	8.66	7.24	8.58	½ PS	2.95	0.47	6.50	M20*2.5	F16
mm	455	282	402	261	554	398	100	220	184	218	½ PS	75	12	165	M20*2.5	

SEA Technical Information

Model	Power (Watts)	Max Torque (In / Lb)	On/Off Speed (Sec / 90°)	Modulating Speed	Weight (Lb)	Manual Override	Mounting Flange
SEA1	5W	132	19	N/A	3.3	Lever	F03 / F05
SEA3	10W	310	12	18	4.4	Lever	F03 / F05
SEA4	10w	443	20	33	6.6	Lever	F05 / F07
SEA8	40W	797	15	19	24.2	Hand-wheel	F07
SEA13	40W	1328	22	29	24.2	Hand-wheel	F07
SEA35	80W	3540	16	24	44	Hand-wheel	F 10
SEA44	80W	4425	22	28	44	Hand-wheel	F 10
SEA57	80W	5750	28	38	44	Hand-wheel	F 10
SEA88	120W	8850	46	59	71	Hand-wheel	F12 / F14
SEA132	120W	13275	46	79	71	Hand-wheel	F12 / F14
SEA177	180W	17700	58	65	157	Hand-wheel	F 16
SEA221	180W	22125	58	76	157	Hand-wheel	F 16
SEA265	180W	26550	58	71	159	Hand-wheel	F 16
SEA310	220W	31000	58	76	159	Hand-wheel	F 16

How to order

Example: SEA8-PP-AS-HT

A SEA8, electric actuator [797 lbf-in], with IP67, dust-tight, weather-tight [Type 4 / 4x] enclosure, for 120 Vac / 1 PH power supply, with modulating controller (-PP), two auxiliary limit switches (-AS), and Heater & Thermostat (-HT)

SEA Series & Actuator Size	Suffixes / Options
	<blank> 120 Vac / 1PH
SEA1 (132 lbf-in)	-1 220V*
SEA3 (310 lbf-in)	-2 24 Vac / 1PH*
SEA4 (443 lbf-in)	-3 12 Vdc*
SEA8 (797 lbf-in)	-4 24 Vdc
SEA13 (1328 lbf-in)	-AS Auxiliary Switches x 2 (one set)
SEA35 (3540 lbf-in)	-FP Feedback Potentiometer*
SEA44 (4425 lbf-in)	-CR Control Relays*
SEA57 (5750 lbf-in)	-HT Heater & Thermostat
SEA88 (8850 lbf-in)	-PP Proportional Positioner*
SEA132 (13275 lbf-in)	-FT Feedback Transmitter*
SEA177* (17700 lbf-in)	-TR Timers*
SEA221* (22125 lbf-in)	-TS Torque Sensor*
SEA265* (26550 lbf-in)	
SEA310* (31000 lbf-in)	

*POA

Note: Responsibility for proper selection, use and maintenance of any product remains solely with the purchaser and end user. We reserve the right to modify or improve the designs or specifications of any product at any time without notice.

About ASC Engineered Solutions

ASC Engineered Solutions is defined by quality—in its products, services and support. With more than 1,400 employees, the company's portfolio of precision-engineered piping support, valves and connections provides products to more than 4,000 customers across industries, such as mechanical, industrial, fire protection, oil and gas, and commercial and residential construction. Its portfolio of leading brands includes ABZ Valve®, AFCON®, Anvil®, Anvil EPS, Anvil Services, Basic-PSA, Beck®, Catawissa, Cooplet®, FlexHead®, FPPI®, Gruklok®, J.B. Smith, Merit®, North Alabama Pipe, Quadrant®, SCI®, Sharpe®, SlideLOK®, SPF® and SprinkFLEX®. With headquarters in Commerce, CA, and Exeter, NH, ASC also has ISO 9001:2015 certified production facilities in PA, TN, IL, TX, AL, LA, KS, and RI.



asc-es.com

Building connections that last™

FC-DS-SERIES-SEA-v04 20260129

